

LUKB-Eigenheim-Index

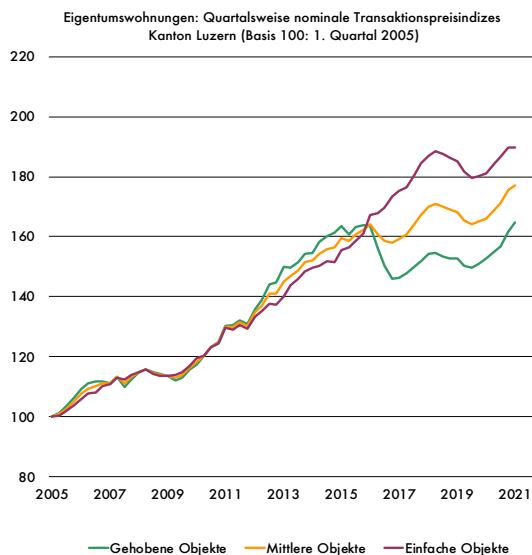
Nominale Transaktionspreisindizes für Eigentumswohnungen im Kanton Luzern

Quelle: Wüest Partner AG



Quartalsindex (Basis 100: 1. Quartal 2005)

Jahr	Quartal	Gehobene Objekte	Mittlere Objekte	Einfache Objekte
2021	4			
2021	3			
2021	2			
2021	1	164.7	177.0	189.6
2020	4	161.8	175.5	189.7
2020	3	156.9	171.1	186.6
2020	2	155.0	168.8	184.1
2020	1	152.6	166.1	181.0
2019	4	151.0	165.0	180.1
2019	3	149.8	164.1	179.4
2019	2	150.2	165.5	181.8
2019	1	152.6	168.3	185.0
2018	4	152.6	168.9	186.2
2018	3	153.5	169.9	187.7
2018	2	154.5	170.9	188.6
2018	1	154.4	169.9	186.9
2017	4	152.0	167.2	184.4
2017	3	150.0	164.1	180.5
2017	2	147.8	160.8	176.5
2017	1	146.3	159.3	175.2
2016	4	145.9	158.1	173.5
2016	3	150.3	158.6	169.6
2016	2	156.1	160.8	167.8
2016	1	163.7	164.2	167.2
2015	4	163.7	162.3	160.9
2015	3	163.1	160.8	158.6
2015	2	160.7	158.6	156.4
2015	1	163.5	159.6	155.6
2014	4	161.2	156.3	151.6
2014	3	160.2	156.0	151.8
2014	2	158.4	154.3	150.3
2014	1	154.5	152.1	149.6
2013	4	154.2	151.4	148.4
2013	3	151.6	148.8	146.0
2013	2	149.7	146.8	143.8
2013	1	149.9	145.0	140.3
2012	4	144.6	141.0	137.3
2012	3	144.1	141.0	137.7
2012	2	138.8	137.0	135.2
2012	1	135.9	134.7	133.5
2011	4	130.8	130.2	129.5
2011	3	132.2	131.5	130.7
2011	2	130.6	130.0	129.2
2011	1	130.3	130.1	129.6
2010	4	124.9	124.7	124.4
2010	3	123.3	123.3	123.2
2010	2	120.3	120.4	120.4
2010	1	117.3	118.4	119.4
2009	4	115.7	116.5	117.2
2009	3	112.9	114.0	114.8
2009	2	112.1	113.1	113.9
2009	1	113.7	113.7	113.5
2008	4	114.2	114.0	113.6
2008	3	115.0	114.6	114.2
2008	2	115.7	115.8	115.9
2008	1	114.9	114.8	114.7
2007	4	112.5	113.2	113.8
2007	3	109.9	111.2	112.4
2007	2	113.2	113.2	113.1
2007	1	111.1	111.0	110.8
2006	4	111.9	111.2	110.2
2006	3	111.9	110.1	108.1
2006	2	111.1	109.4	107.7
2006	1	109.3	107.7	106.1
2005	4	106.3	105.1	103.9
2005	3	103.3	102.7	101.8
2005	2	101.3	100.9	100.5
2005	1	100.0	100.0	100.0



LUKB-Eigenheim-Index

Nominale Transaktionspreisindizes für Eigentumswohnungen im Kanton Luzern nach Regionen

Quelle: Wüest Partner AG

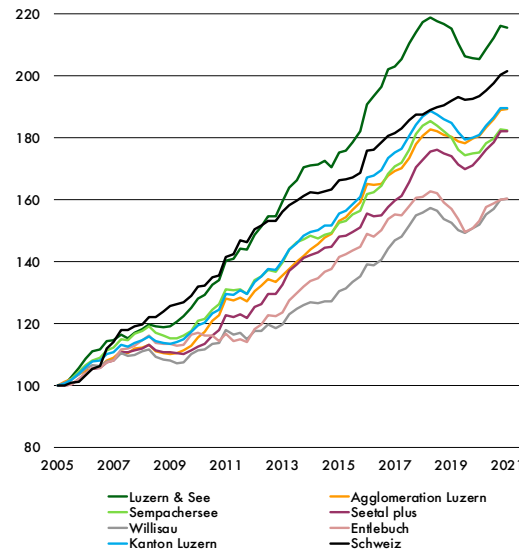
Quartalsindex (Basis 100: 1. Quartal 2005)

Einfaches Objekt

Jahr	Quartal	Luzern & See	Agglom. Luzern	Sempachersee	Seetal plus	Willisau	Entlebuch	Kanton Luzern	Schweiz
2021	4								
2021	3								
2021	2								
2021	1	215.5	189.3	182.6	182.1	160.3	160.3	189.6	201.5
2020	4	216.2	189.0	182.7	182.2	160.1	159.9	189.7	200.5
2020	3	212.3	186.0	179.7	178.6	157.0	158.9	186.6	197.7
2020	2	208.8	183.3	178.4	176.3	155.2	157.6	184.1	195.2
2020	1	205.6	180.8	175.4	173.6	152.1	153.0	181.0	193.7
2019	4	205.8	179.8	174.8	171.2	150.8	150.7	180.1	192.6
2019	3	206.3	178.1	174.3	169.9	149.3	149.6	179.4	192.4
2019	2	210.7	178.8	176.2	171.4	150.3	153.9	181.8	193.2
2019	1	215.3	180.5	180.0	174.2	152.7	157.2	185.0	192.1
2018	4	216.9	180.9	182.1	174.8	153.8	159.1	186.2	190.4
2018	3	217.8	182.1	183.8	176.3	156.5	162.0	187.7	190.1
2018	2	218.9	182.7	185.5	175.7	157.2	162.8	188.6	188.9
2018	1	217.4	180.7	183.9	173.0	155.9	161.1	186.9	187.6
2017	4	214.0	177.9	181.2	170.6	155.0	160.6	184.4	187.4
2017	3	210.7	173.6	176.2	165.6	151.6	158.0	180.5	185.7
2017	2	205.5	170.1	172.0	161.4	148.0	154.8	176.5	183.1
2017	1	203.2	169.2	170.7	159.7	146.8	155.2	175.2	181.6
2016	4	202.1	167.7	168.4	157.5	144.1	153.8	173.5	180.8
2016	3	196.6	165.2	164.6	154.9	140.7	150.3	169.6	178.5
2016	2	193.4	164.8	162.4	154.6	138.7	147.9	167.8	176.1
2016	1	190.7	165.2	161.9	155.5	139.2	149.0	167.2	175.9
2015	4	182.2	159.0	156.4	151.1	135.1	144.9	160.9	168.7
2015	3	178.7	156.7	155.3	149.7	133.4	143.6	158.6	167.3
2015	2	176.0	154.3	153.3	148.3	131.5	142.4	156.4	166.6
2015	1	175.2	153.1	152.7	148.2	130.4	141.4	155.6	166.4
2014	4	170.4	149.1	149.4	144.9	127.2	137.6	151.6	163.3
2014	3	172.7	147.8	148.7	144.6	127.1	136.6	151.8	162.9
2014	2	171.5	145.6	147.6	142.9	126.6	134.7	150.3	162.2
2014	1	171.0	143.8	148.2	142.0	126.9	133.8	149.6	162.4
2013	4	170.6	141.9	147.3	141.1	125.9	131.8	148.4	161.3
2013	3	166.4	139.9	146.4	139.2	124.7	129.9	146.0	159.8
2013	2	163.9	137.8	143.9	137.2	123.1	127.6	143.8	158.3
2013	1	159.6	135.6	139.8	132.5	119.6	123.5	140.3	156.0
2012	4	154.8	133.5	136.7	129.5	118.6	122.3	137.3	153.0
2012	3	154.6	134.3	137.3	129.4	119.6	122.7	137.7	153.2
2012	2	151.4	132.2	135.2	126.3	117.6	119.7	135.2	151.6
2012	1	148.5	130.5	134.0	125.4	117.5	118.1	133.5	150.4
2011	4	143.8	127.0	129.6	121.7	114.8	113.9	129.5	146.3
2011	3	144.1	128.4	131.1	122.9	117.0	115.0	130.7	147.0
2011	2	141.0	127.3	130.7	122.0	116.4	114.4	129.2	142.3
2011	1	140.3	128.1	130.9	122.6	117.8	116.8	129.6	141.6
2010	4	134.1	122.5	126.3	117.8	113.6	114.4	124.4	135.7
2010	3	132.4	120.8	124.5	116.2	113.4	116.2	123.2	135.0
2010	2	129.3	117.2	121.5	113.3	111.6	116.1	120.4	132.2
2010	1	128.0	115.4	120.8	112.5	111.2	116.9	119.4	131.9
2009	4	125.1	112.9	117.7	111.3	110.0	116.3	117.2	128.9
2009	3	122.3	111.3	116.0	110.0	107.4	113.1	114.8	127.0
2009	2	120.5	110.5	115.3	110.5	107.0	112.7	113.9	126.1
2009	1	119.1	110.2	115.2	110.7	108.0	113.3	113.5	125.5
2008	4	118.7	110.3	116.2	110.7	108.2	113.3	113.6	123.9
2008	3	119.0	110.9	116.9	111.3	109.3	113.7	114.2	122.1
2008	2	119.7	113.1	119.2	113.2	111.7	116.0	115.9	122.0
2008	1	118.1	112.2	117.7	111.9	111.0	114.6	114.7	119.8
2007	4	116.9	111.9	116.8	111.4	109.9	112.7	113.8	119.0
2007	3	115.2	110.3	114.7	110.6	109.6	111.8	112.4	117.7
2007	2	116.5	111.0	114.9	110.8	110.3	111.6	113.1	117.7
2007	1	114.7	108.8	112.2	108.0	108.0	108.2	110.8	113.9
2006	4	114.2	108.0	111.3	107.3	107.9	110.2	111.8	111.8
2006	3	111.6	105.9	109.0	105.5	106.3	105.7	108.1	106.1
2006	2	110.9	105.4	108.1	105.2	106.5	105.5	107.7	105.3
2006	1	108.5	104.8	106.4	103.8	105.2	103.9	106.1	103.1
2005	4	105.5	103.4	104.3	101.9	103.6	102.1	103.9	101.3
2005	3	102.7	102.0	102.0	100.2	101.7	100.1	101.8	100.8
2005	2	100.2	101.1	100.6	100.0	100.9	100.0	100.5	100.0
2005	1	100.0	100.0	100.0	100.0	100.0	100.0	100.0	100.0



Eigentumswohnungen: Quartalsweise nominale Transaktionspreisindizes
Einfaches Objekt (Basis 100: 1. Quartal 2005)



LUKB-Eigenheim-Index

Nominale Transaktionspreisindizes für Eigentumswohnungen im Kanton Luzern nach Regionen

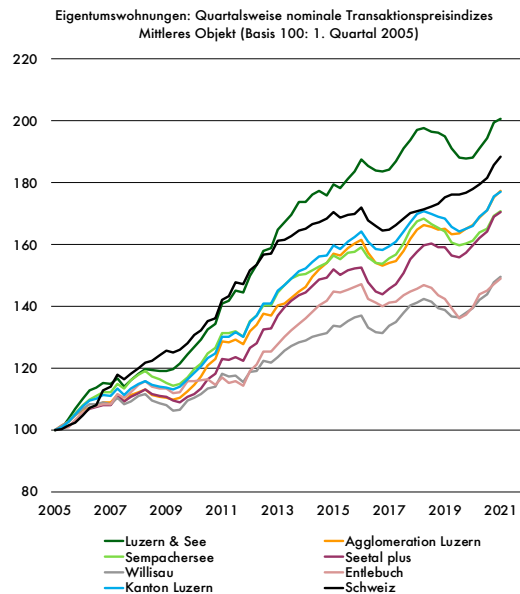
Quelle: Wüest Partner AG



Quartalsindex (Basis 100: 1. Quartal 2005)

Mittleres Objekt

Jahr	Quartal	Luzern & See	Agglom. Luzern	Sempachersee	Seetal plus	Willisau	Entlebuch	Kanton Luzern	Schweiz
2021	4								
2021	3								
2021	2								
2021	1	200.6	177.3	170.7	170.3	149.4	149.0	177.0	188.4
2020	4	199.3	175.3	169.2	168.9	147.7	147.2	175.5	185.6
2020	3	194.3	171.1	165.1	164.2	143.7	145.0	171.1	181.5
2020	2	191.1	168.6	163.9	162.1	142.0	143.8	168.8	179.3
2020	1	188.2	166.3	161.2	159.6	139.3	139.8	166.1	177.9
2019	4	187.8	165.2	160.3	157.2	137.9	137.4	165.0	176.6
2019	3	188.0	163.6	159.7	155.7	136.4	136.2	164.1	176.1
2019	2	191.2	163.4	160.7	156.4	136.6	139.4	165.5	176.0
2019	1	195.1	165.0	164.1	159.1	138.8	142.5	168.3	175.2
2018	4	196.1	164.7	165.4	159.1	139.4	143.6	168.9	173.0
2018	3	196.4	165.6	166.7	160.2	141.6	146.0	169.9	172.3
2018	2	197.5	166.2	168.3	159.7	142.3	146.8	170.9	171.3
2018	1	197.1	164.6	167.4	157.6	141.3	145.6	169.9	170.7
2017	4	193.7	161.8	164.6	155.1	140.2	144.8	167.2	170.1
2017	3	191.0	157.8	160.2	150.7	138.0	143.6	164.1	168.4
2017	2	186.8	154.7	156.8	147.1	135.0	141.3	160.8	166.3
2017	1	184.3	154.0	155.4	145.5	133.6	141.2	159.3	164.9
2016	4	183.5	153.1	153.7	143.9	131.4	140.1	158.1	164.6
2016	3	183.9	153.9	154.1	144.7	131.7	141.0	158.6	166.1
2016	2	185.4	157.2	155.7	147.8	133.1	142.4	160.8	167.9
2016	1	187.4	161.6	159.2	152.6	137.0	147.0	164.2	172.0
2015	4	183.7	160.3	157.7	152.2	136.3	146.1	162.3	169.8
2015	3	181.1	158.8	157.2	151.6	135.2	145.5	160.8	169.5
2015	2	178.4	156.5	155.3	150.2	133.3	144.3	158.6	168.8
2015	1	179.5	157.1	156.4	151.8	133.7	144.8	159.6	170.5
2014	4	175.7	153.9	153.9	149.4	131.2	141.9	156.3	168.4
2014	3	177.4	151.9	152.7	148.5	130.6	140.3	156.0	167.3
2014	2	176.0	149.5	151.5	146.7	130.0	138.2	154.3	166.5
2014	1	173.7	146.2	150.6	144.3	128.9	136.0	152.1	165.0
2013	4	173.8	144.6	150.1	143.7	128.4	134.3	151.4	164.4
2013	3	169.4	142.6	149.0	141.7	127.1	132.3	148.8	162.8
2013	2	167.2	140.7	146.7	139.8	125.6	130.1	146.8	161.5
2013	1	164.9	140.3	144.4	136.9	123.6	127.7	145.0	161.3
2012	4	158.8	137.1	140.2	132.9	121.7	125.4	141.0	157.0
2012	3	158.0	137.5	140.3	132.4	122.3	125.4	141.0	156.6
2012	2	153.4	134.0	136.9	127.9	119.1	121.2	137.0	153.5
2012	1	149.9	131.8	135.2	126.5	118.6	119.1	134.7	151.7
2011	4	144.5	127.8	130.2	122.2	115.4	114.4	130.2	147.0
2011	3	145.1	129.3	131.8	123.7	117.7	115.6	131.5	147.8
2011	2	141.8	128.2	131.4	122.6	117.2	115.1	130.0	143.1
2011	1	140.8	128.5	131.2	122.9	118.1	117.1	130.1	142.0
2010	4	134.4	122.8	126.5	118.1	113.9	114.7	124.7	135.9
2010	3	132.5	121.0	124.6	116.2	113.5	116.3	123.3	135.1
2010	2	129.3	117.2	121.5	113.2	111.6	116.0	120.4	132.1
2010	1	126.9	114.6	119.7	111.5	110.2	115.8	118.4	130.7
2009	4	124.4	112.4	117.0	110.6	109.4	115.6	116.5	128.1
2009	3	121.3	110.5	114.9	109.0	106.5	112.2	114.0	125.9
2009	2	119.5	109.8	114.4	109.6	106.2	111.8	113.1	125.1
2009	1	119.1	110.4	115.1	110.8	108.0	113.3	113.7	125.6
2008	4	119.0	110.7	116.4	111.0	108.5	113.5	114.0	124.1
2008	3	119.3	111.3	117.3	111.6	109.6	114.0	114.6	122.4
2008	2	119.6	113.0	118.9	112.9	111.6	115.8	115.8	121.8
2008	1	118.2	112.3	117.7	111.9	111.1	114.7	114.8	119.9
2007	4	116.2	111.4	116.0	110.6	109.3	112.1	113.2	118.3
2007	3	113.9	109.2	113.4	109.3	108.4	110.5	111.2	116.4
2007	2	116.6	111.2	114.9	110.9	110.4	111.6	113.2	117.8
2007	1	114.9	109.0	112.3	108.1	108.2	108.3	111.0	114.1
2006	4	115.2	109.0	112.1	108.1	108.7	108.2	111.2	112.7
2006	3	113.7	107.8	110.9	107.3	108.3	107.6	110.1	108.1
2006	2	112.7	107.2	109.8	106.9	108.3	107.1	109.4	107.0
2006	1	110.1	106.5	108.0	105.4	106.8	105.5	107.7	104.6
2005	4	106.7	104.6	105.4	103.0	104.7	103.2	105.1	102.4
2005	3	103.4	102.8	102.6	101.0	102.5	100.9	102.7	101.5
2005	2	100.5	101.4	100.8	100.4	101.3	100.4	100.9	100.4
2005	1	100.0	100.0	100.0	100.0	100.0	100.0	100.0	100.0



LUKB-Eigenheim-Index

Nominale Transaktionspreisindizes für Eigentumswohnungen im Kanton Luzern nach Regionen

Quelle: Wüest Partner AG

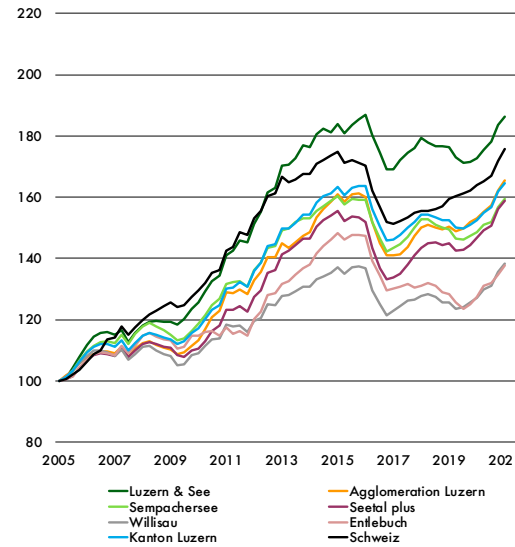
Quartalsindex (Basis 100: 1. Quartal 2005)

Gehobenes Objekt

Jahr	Quartal	Luzern & See	Agglom. Luzern	Sempachersee	Seetal plus	Willisau	Entlebuch	Kanton Luzern	Schweiz
2021	4								
2021	3								
2021	2								
2021	1	186.4	165.5	159.5	159.0	138.5	137.7	164.7	175.8
2020	4	183.6	162.2	156.7	156.2	135.7	134.8	161.8	171.8
2020	3	178.0	157.4	152.0	150.8	131.2	132.0	156.9	167.0
2020	2	175.3	155.2	151.1	149.2	129.8	131.1	155.0	165.1
2020	1	172.8	153.2	148.7	146.9	127.3	127.5	152.6	163.9
2019	4	171.5	151.8	147.4	144.4	125.8	124.9	151.0	162.2
2019	3	171.2	149.8	146.3	142.8	124.0	123.6	149.8	161.3
2019	2	173.2	148.8	146.4	142.6	123.4	125.6	150.2	160.4
2019	1	176.2	150.4	149.5	145.0	125.6	128.4	152.6	159.4
2018	4	176.7	149.5	150.1	144.4	125.6	128.9	152.6	157.0
2018	3	176.7	150.2	151.1	145.4	127.5	131.1	153.5	156.2
2018	2	178.0	150.9	152.8	145.1	128.3	131.9	154.5	155.4
2018	1	179.4	150.0	152.9	143.5	127.7	131.2	154.4	155.6
2017	4	176.1	147.3	150.2	141.2	126.6	130.4	152.0	155.0
2017	3	174.5	143.8	147.0	137.9	126.3	131.8	150.0	153.5
2017	2	172.1	141.4	144.7	135.0	124.4	130.7	147.8	152.1
2017	1	169.1	141.1	143.3	133.9	122.9	130.1	146.3	151.2
2016	4	169.0	141.2	142.3	133.2	121.5	129.5	145.9	151.8
2016	3	174.5	145.0	146.6	137.0	125.1	134.4	150.3	156.7
2016	2	180.4	151.8	151.8	143.5	129.7	139.1	156.1	162.1
2016	1	187.1	160.0	159.1	151.9	136.9	147.4	163.7	170.5
2015	4	185.4	161.4	159.3	153.4	137.5	147.6	163.7	171.2
2015	3	183.7	161.1	159.6	153.6	137.0	147.5	163.1	172.0
2015	2	180.9	158.6	157.5	152.2	135.1	146.2	160.7	171.2
2015	1	184.0	160.9	160.4	155.6	137.0	148.4	163.5	174.8
2014	4	181.2	158.6	158.9	154.0	135.2	146.3	161.2	173.8
2014	3	182.3	156.1	156.9	152.5	134.2	144.0	160.2	172.0
2014	2	180.7	153.4	155.5	150.5	133.3	141.8	158.4	170.9
2014	1	176.5	148.5	153.1	146.5	130.9	138.1	154.5	167.7
2013	4	177.1	147.3	153.0	146.4	130.8	136.8	154.2	167.6
2013	3	172.7	145.2	151.9	144.3	129.4	134.7	151.6	165.9
2013	2	170.6	143.5	149.7	142.6	128.1	132.7	149.7	164.8
2013	1	170.4	144.9	149.3	141.4	127.7	131.8	149.9	166.7
2012	4	163.0	140.5	143.9	136.3	124.8	128.6	144.6	161.2
2012	3	161.6	140.5	143.6	135.3	125.0	128.2	144.1	160.3
2012	2	155.3	135.7	138.7	129.6	120.6	122.7	138.8	155.6
2012	1	151.2	133.0	136.3	127.5	119.6	120.2	135.9	153.1
2011	4	145.2	128.4	130.9	122.7	115.9	114.9	130.8	147.8
2011	3	145.9	130.0	132.6	124.3	118.3	116.2	132.2	148.7
2011	2	142.5	128.8	132.2	123.2	117.8	115.5	130.6	143.9
2011	1	141.1	128.8	131.6	123.2	118.3	117.4	130.3	142.5
2010	4	134.5	123.0	126.8	118.2	113.9	114.7	124.9	136.2
2010	3	132.6	120.9	124.7	116.2	113.4	116.3	123.3	135.2
2010	2	129.2	117.0	121.3	113.0	111.5	115.9	120.3	132.0
2010	1	125.7	113.4	118.7	110.4	109.2	114.6	117.3	129.5
2009	4	123.6	111.5	116.2	109.8	108.5	114.8	115.7	127.4
2009	3	120.2	109.5	114.0	108.0	105.5	111.1	112.9	124.9
2009	2	118.5	108.7	113.4	108.6	105.2	110.7	112.1	124.1
2009	1	119.2	110.3	115.2	110.8	108.0	113.3	113.7	125.7
2008	4	119.3	110.9	116.7	111.2	108.6	113.7	114.2	124.5
2008	3	119.7	111.6	117.7	111.9	110.0	114.4	115.0	123.0
2008	2	119.5	112.8	118.9	112.8	111.5	115.6	115.7	121.8
2008	1	118.2	112.4	117.9	111.9	111.1	114.7	114.9	120.0
2007	4	115.6	110.7	115.4	109.9	108.6	111.4	112.5	117.6
2007	3	112.6	107.8	112.1	108.0	107.0	109.1	109.9	115.1
2007	2	116.6	111.1	115.0	110.8	110.3	111.5	113.2	117.8
2007	1	115.0	109.0	112.5	108.2	108.2	108.4	111.1	114.3
2006	4	116.0	109.7	113.0	108.9	109.5	108.9	111.9	113.5
2006	3	115.7	109.6	112.8	109.1	110.1	109.5	111.9	110.0
2006	2	114.4	108.8	111.6	108.5	109.9	108.8	111.1	108.7
2006	1	111.7	107.9	109.6	106.8	108.3	107.0	109.3	106.2
2005	4	107.9	105.7	106.7	104.1	105.8	104.3	106.3	103.6
2005	3	104.2	103.5	103.4	101.7	103.2	101.5	103.3	102.3
2005	2	100.8	101.8	101.3	100.6	101.6	100.7	101.3	100.7
2005	1	100.0	100.0	100.0	100.0	100.0	100.0	100.0	100.0



Eigentumswohnungen: Quartalsweise nominale Transaktionspreisindizes Gehobenes Objekt (Basis 100: 1. Quartal 2005)

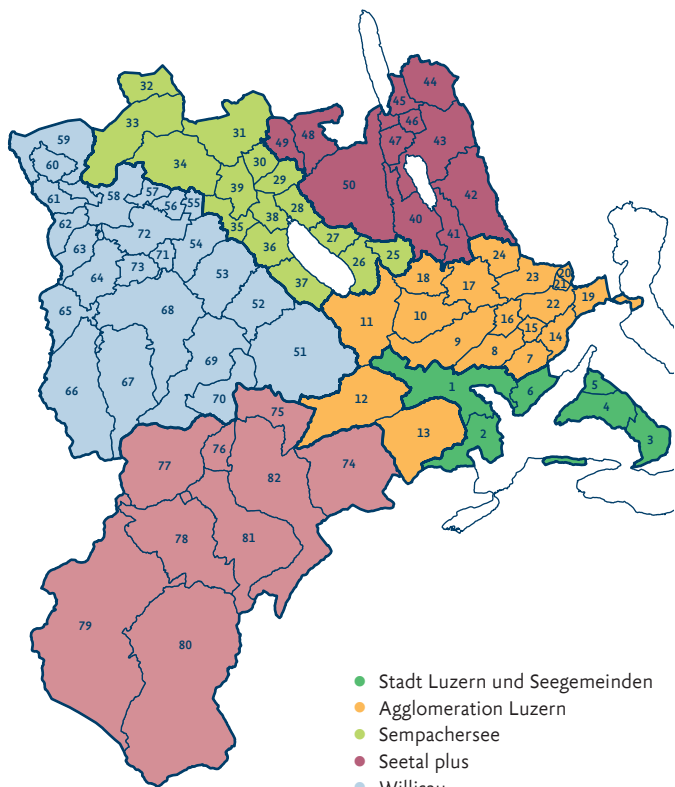


LUKB-Eigenheim-Index

Nominale Transaktionspreisindizes Kanton Luzern

Quelle: Wüest Partner AG

Regionalisierung Kanton Luzern



- Stadt Luzern und Seegemeinden
- Agglomeration Luzern
- Sempachersee
- Seetal plus
- Willisau
- Entlebuch

● Stadt Luzern und Seegemeinden	27 Eich	56 Egolzwil
1 Luzern	28 Schenkon	57 Nebikon
2 Horw	29 Geuensee	58 Altshofen
3 Vitznau	30 Büron	59 Pfaffnau
4 Weggis	31 Triengen	60 Roggliswil
5 Greppen	32 Wikon	61 Altbüron
6 Meggen	33 Reiden	62 Grossdietwil
	34 Dagmersellen	63 Fischbach
	35 Mauensee	64 Zell
● Agglomeration Luzern	36 Oberkirch	65 Ufhusen
7 Adligenswil	37 Nottwil	66 Luthern
8 Ebikon	38 Sursee	67 Hergiswil b. W.
9 Emmen	39 Knutwil	68 Willisau
10 Rothenburg		69 Menznau
11 Neuenkirch	● Seetal plus	70 Wolhusen
12 Malters	40 Römerswil	71 Alberswil
13 Kriens	41 Hochdorf	72 Schötz
14 Udligenswil	42 Hohenrain	73 Gettnau
15 Dierikon	43 Hitzkirch	
16 Buchrain	44 Schongau	● Entlebuch
17 Eschenbach	45 Aesch	74 Schwarzenberg
18 Rain	46 Altwis	75 Werthenstein
19 Meierskappel	47 Ermensee	76 Doppleschwand
20 Honau	48 Rickenbach	77 Romoos
21 Gisikon	49 Schlierbach	78 Schüpfheim
22 Root	50 Beromünster	79 Escholzmatt-Marbach
23 Inwil		80 Flühli
24 Ballwil	● Willisau	81 Hasle
	51 Ruswil	82 Entlebuch
● Sempachersee	52 Buttisholz	
25 Hildisrieden	53 Grosswangen	
26 Sempach	54 Ettiswil	
	55 Wauwil	

LUKB-Eigenheim-Index

Nominale Transaktionspreisindizes für Eigentumswohnungen im Kanton Luzern

Quelle: Wüest Partner AG

Kurzübersicht Transaktionspreisindex

Von Wüest Partner entwickelter und konzipierter transaktionsbasierter und qualitätsbereinigter Preisindex, welcher die Preisentwicklung auf dem Schweizer Immobilienmarkt abbildet. Der Transaktionspreisindex basiert auf der hedonischen Bewertungsfunktion von Wüest & Partner, mit welcher sich Standardobjekte im Segment Wohneigentum – also Objekte ohne periodische Erträge – marktgerecht und aktuell bewerten lassen. Den beiden Bewertungsfunktionen für Wohneigentum liegt eine international akzeptierte, wissenschaftlich fundierte Methode zugrunde.

Spezifikation der Indexobjekte

Eigentumswohnungen (EWG)

Objektart	Nettowoohnfläche in m²	Standard	Mikrolage	Zustand	Alter
Einfaches	90	2.5	3.0	4.5	5
Mittleres	110	3.5	3.5	4.5	5
Gehobenes	150	4.5	4.5	4.5	5

Bemerkungen : Informationen über die Qualitätsfaktoren (Zustand, Standard und Mikrolage) sind anhand einer Note mit der Skala von 1 bis 5 angegeben. Die Note «5» entspricht der besten Konfiguration und die Note «1» der schlechtesten.